

Harrington Signal Inc.  
 2519 4th Avenue, Moline, Illinois 61265  
 P.O. Box 590, Moline, Illinois 61266-0590  
 Phone: (800) 577-5758 Local: (309) 762-0731 Fax: (309) 762-8215  
 Internet: www.harringtonfire.com



### Description

All I-Spy detectors fit into I-Spy mounting bases.

Bases have wide interior diameter for ease of access to cables and terminal and there are two slots for fixing screws. The slots enable two fixing screws to be located at a spacing of 2" to 2.7". Detectors fit into bases one way only, without snagging, and require clockwise rotation without push force to be plugged in.

Universal patented address cards, known as X-Perf cards, are supplied with all bases. Consult the coding guide in the installation instructions to determine which pips are to be removed for the card to give the correct address. Lay the card on a flat surface, down, insert a screwdriver into the slot on the reverse of the pip to be removed and give a firm twist.

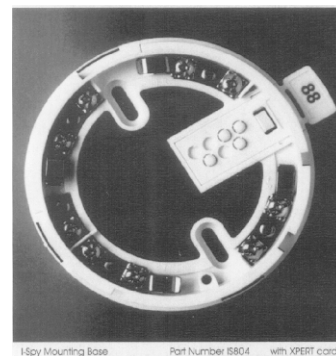
When the card is coded insert it into the side of the

making sure that the card locks itself into place. As a detector is inserted into the base, the remaining pips operate the address buttons on the detector and the detector electronics read the address. An earth connection is not required for either safety of correct operations of detectors. The ground (earth) terminal is isolated and is provided for termination of grounded conductors of cable screens and to maintain earth continuity where necessary.

### Mechanical Construction

All detectors in the I-Spy range have the same external dimensions, except the multi-sensor detector, which is deeper.

The material used to mold the housings is a UL 94 V-0 grade of polycarbonate in a pure white finish.



I-Spy Mounting Base Part Number IS804 with XPERT card

All detectors in the I-Spy range have four nickel-plated stainless steel terminals for connecting to a detector base. The associated detector can be locked into the base using the normal locking screw.

### Ordering Information

Model Number	Part Number	Description
IS804	IS804	4" Addressable Mounting Base
IS805	IS805	4" Isolator Base. Use w/ IS810 only
IS807	IS807	6" Addressable Low Profile Relay Base
IS808	IS808	4" Isolator Base to be used with I-Spy Series Smokes & Heats
IS809	IS809	6" EZ Fit Addressable Base
IS840	IS840	Pre-addressed X-Perf Cards
IS841	IS841	Blank X-Perf Card (per 12)
CS842	CS842	6" Skirt and T-bar (to connect to 4" bases)

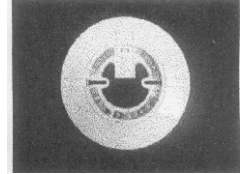
## Isolators

All I-Spy isolators and isolation bases are patented\*

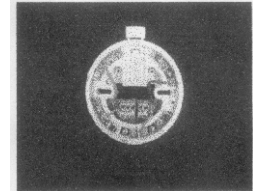
\* The Isolator is polarity sensitive. Connect positive line to L2 in/out and negative line to L1 in. The I-Spy isolator has been approved by UL for the use with FireSpy® Tracker 1000, 2000, and 8000 Addressable Fire Alarm Control Panels.

✍ IS809 EZ-Fit is an ultra low profile 6-1/4 in. mounting base for I-Spy smoke and heat detectors that can be fitted to mounting boxes up to 4 in. in size. It offers a high degree of protection against unauthorized removal of detectors. The hinged covers, which conceal the screws, are locked in to place by the detector, which in turn is locked into the base with the standard locking screw.

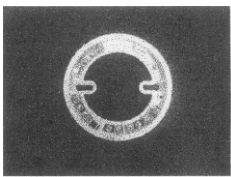
✍ Low Power Relay Base/ IS807- The relay base incorporates a low power relay to control field equipment such as automatic door closures. The base gives a set of voltage free relay contacts controlled by the remote output of an I-Spy detector



IS809



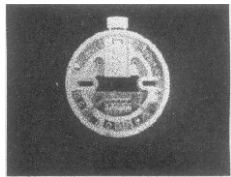
IS807



IS805

✍ 4in Base/ IS804- The base has been designed to enable detector to be fitted without the need for any force. It has a "one way only" fit. By means of a unique X-Pert Card, the address information is held in the base while keeping it entirely free from electronic parts. This coded plastic card is inserted into the base, so that the address remains the same if a detector is replaced for servicing purposes.

✍ Isolator Base/ IS805- The base is designed to accept I-Spy Isolators (IS810) only. This ensures that the I-Spy detectors cannot be fitted to isolator bases in error. The Isolator base has only three terminals and an earth connection.



IS808

✍ Isolating Base/ IS808- The isolating base senses and isolates short circuit faults on I-Spy loops and spurs. The base is loop powered, polarity sensitive and accepts the X-Pert Card to set the associated detector bases. In short circuit conditions, the integral yellow LED is

illuminated- The detector associated with the base remains active under short circuit conditions. Voltage sensing is continuous so that power and signals to the affected section are restored automatically when the fault is cleared. Up to twenty devices (detectors and

## Interchangeability

Any I-Spy detector may be replaced by any other type in the range. For example, if a smoke detector proved unsuitable in a particular application it could be simply replaced with a heat detector set to the appropriate grade or range, provided that the maximum floor area coverage meets local code.

Discovery detectors can also be used to replace detectors and it is possible to change types, e.g. smoke for heat or vice versa when mixing types. Factory-new I-Spy detectors are set to mid range, equivalent to I-Spy, and the flashing LED feature is disabled.

Note: the control and Indicating equipment must not have a drift compensation algorithm activated when interrogating I-Spy detectors. Some I-Spy panels may not recognize the multi-sensor or CO fire

NOTICE: The information contained in this document is intended only as a summary and is subject to change without notice. The devices described in this document have specific instruction sheets which cover various technical, limitation and liability information. Copies of these instruction sheets and the General Product Warning and Limitations Document, which also contains important information are provided with the product and are available from Harrington Signal Inc. Fire Alarm. Information contained in these documents should be consulted before specifying or using the product. For further information or assistance concerning particular problems contact Harrington Signal Inc. Harrington Signal Inc. Fire Alarm reserves the right to change specifications without notice. Quality manufactured for Harrington Signal by Apollo.