



# Addressable Pull Stations

Harrington Signal Inc.  
 2519 4th Avenue, Moline, Illinois 61265  
 P.O. Box 590, Moline, Illinois 61266-0590  
 Phone: (800) 577-5758 Local: (309) 762-0731 Fax: (309) 762-8215  
 Internet: www.harringtonfire.com



## Description

The Harrington model number HSPS-1T-S & HSPS-1T-A Series Non-Coded Addressable Manual Pull Stations provide the most reliable manually activated input signal for early warning signals on supervised or non-supervised alarm systems.

The HSPS series stations are constructed of a die cast housing which is connect-ed to a 14 gauge plated steel back plate at the lower bottom corners. The "T" pull lever, is mounted on the die cast steel and is painted red that reads "PULL DOWN". When the "T" pull lever is activated (Pulled), it allows the plunger on the contact arrangement to be activated.

The HSPS-1T-S Series comes standard with an allen wrench for locking, resetting, and testing. The attached addressable module, M501M, has a rotary dial that can be addressed with any address from 101 to 199 on the addressable "SLC".

The HSPS-1T-A Series comes standard with an allen wrench for locking, resetting and testing. The attached

addressable module, 55000-765, uses the first seven segments of the DIL switch for setting the address. The 55000-765 is addressable from 1 to 126.

System Sensor M501M

### Specifications:

Standby Current:  
 Nominal Operating Voltage: 15-32VDC  
 Average Operating Current: 350uA  
 EOL Resistance: 47K Ohms  
 Maximum IDC Wire Resistance: 40 Ohms  
 Maximum IDC Voltage: 11Volts  
 Maximum IDC Current: 400uA  
 Temperature range: 32° F to 120° F

Apollo 55000-765

### Specifications:

Operating Voltage:  
 17-28 VDC (17V min) 24 VDC DC nominal  
 Current Consumption at 24V  
 Quiescent current 200uA  
 LED Operated Alarm 3.4mA + Quiescent  
 Remote & LED Alarm 6.2mA + Quiescent  
 Switch fault LED +2.8mA (pulsing 0.5s on, 0.5soff)

HSPS Front View

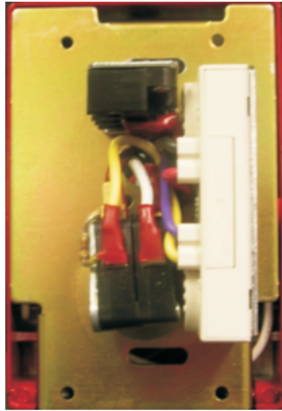


### Features:

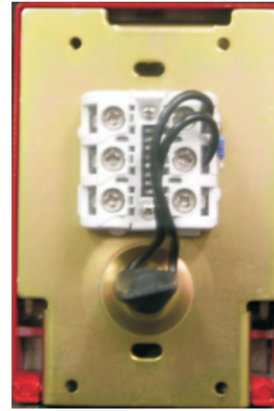
- Durable Die Cast Housing
- 14 ga Plated Steel Back Plate
- Corrosion Inhibited Surface
- Terminal Block on Pigtail Connection
- Single Gang Mounting
- Surface (use HSPSBB) Flush Wall Mounting

## Ordering Information

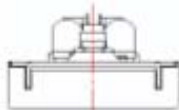
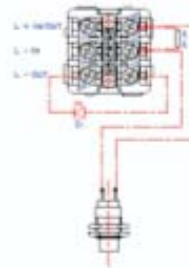
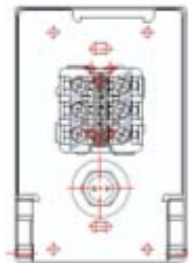
Model Number	Part Number	Description
238-5001	238-5001	HSPS1T-S Addressable Single Action Pull Station, System Sensor
238-5002	238-5002	HSPS1T-A Addressable Single Action Pull Station, Apollo
238-5003	238-5003	HSPS1T-KL-S Addressable Key Lock Reset Pull Station, System Sensor
238-5004	238-5004	HSPS1T-KL-A Addressable Key Lock Reset Pull Station, Apollo
238-5006	238-5006	HSPS1T-LP-S Dual Action Pull Station, System Sensor
238-5007	238-5007	HSPS1T-LP-A Dual Action Pull Station, Apollo
238-5005	238-5005	HSPS1T-LP-KL-S Dual Action Key Lock Reset Pull Station, System Sensor
238-5008	238-5008	HSPS1T-LP-KL-A Dual Action Key Lock Reset Pull Station, Apollo



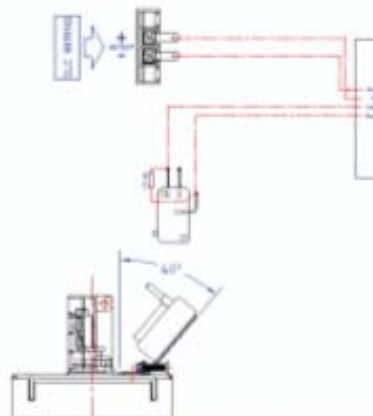
**Back View of HSPS-S**  
System Sensor



**Back View of HSPS-A**  
Apollo



**HSPS-1TA**



**MONITOR MODULE ON  
TILTED POSITION FOR  
EASY ADDRESS SETTING**

**HSPS-1TS**

NOTICE: The information contained in this document is intended only as a summary and is subject to change without notice. The devices described in this document have specific instruction sheets which cover various technical, limitation and liability information. Copies of these instruction sheets and the General Product Warning and Limitations Document, which also contains important information are provided with the product and are available from Harrington Signal Inc. Fire Alarm. Information contained in these documents should be consulted before specifying or using the product. For further information or assistance concerning particular problems contact Harrington Signal Inc. Harrington Signal Inc. Fire Alarm reserves the right to change specifications without notice.