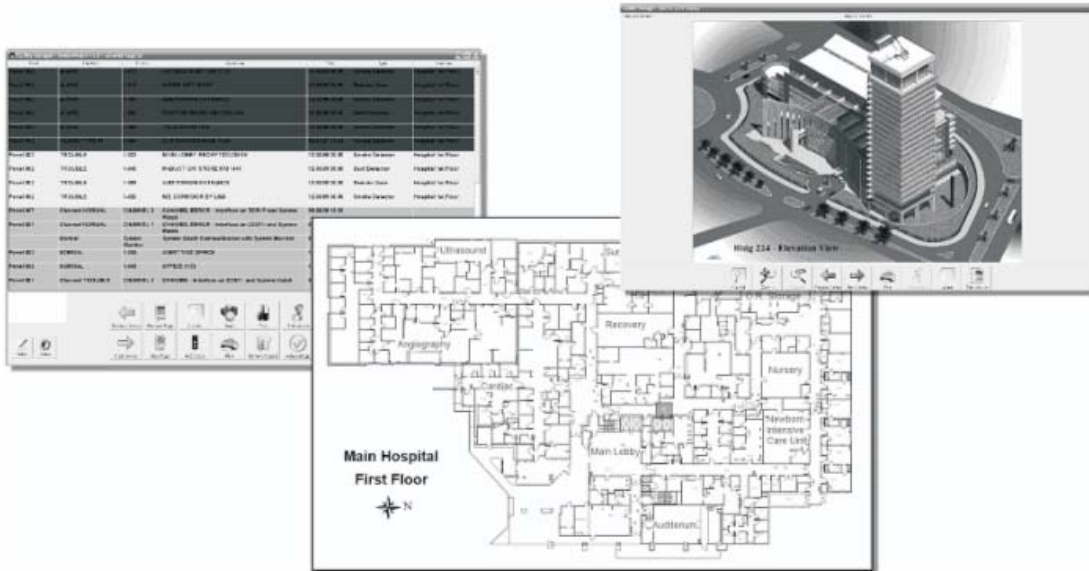


Harrington Signal Inc.
2519 4th Avenue, Moline, Illinois 61265
P.O. Box 590, Moline, Illinois 61266-0590
Phone: (800) 577-5758 Local: (309) 762-0731 Fax: (309) 762-8215
Internet: www.harringtonfire.com



Description

Alarm displays should be easy to read. Tracker graphics 3.0 software provides a simplified interface to help facility managers, guard staff, and emergency responders assess alarm situations. Tracker graphics software can be installed on Windows-based platforms. Using a workgroup environment, multiple users can share access from their own computers.

Requirements

Tracker graphics is easy to install and runs on most readily available PCs, laptops, flat-panel, and touchscreen computers. Basic system requirements:

- Minimum 2GB RAM
- Minimum 1 GB hard drive space
- RS232 or RS485 connections: one for each control panel or network interface port

- TCP/IP serial server
- XGA or WXGA video
- 17- or 19-inch monitor
- Portable USB drive for backups
- Any number of backgrounds (floors)
- SXGA or WXGA screen format recommended
- Touchscreen optional
- Windows XP Professional or Server 2008

Ordering Information

Model Number	Part Number	Description
TS-G-BL	TS-G-BL	Base License includes 500 Native points
TS-G-100NP	TS-G-100NP	Additional 100 Native Points
TS-G-1P	TS-G-1P	Non-Native Point
TS-G-AL	TS-G-AL	Second Additional PC License
TS-G-E	TS-G-E	Automatic Email Alert Option
TG-CBL-NULL	TG-CBL-NULL	Null Modem Cable for PC programming & monitoring mode for T2-P / T8-P



Tracker Graphics

PC Monitoring Display

Features

- Updated user interface
- Intuitive, simplified operation
- Windows-based
- Touch-screen option
- Monitors all intelligent alarm systems
- Automatically pinpoints current device
- One-click device detail
- Device word search
- Hyperlink feature can access live video
- Automatic email notification option
- Color-coded real-time status indication
- Prioritizes events
- One-touch event review (next / previous)
- Zoom in or out with focus on device
- Dynamic "Take Action" instructions
- Field configurable
- Standard symbol sets
- Hi-res screen formats
- Uses WMF files exported from AutoCAD
- Uses JPEG format for photo backgrounds
- Customer logo area

Ordering Information

- Specify number of devices to be monitored
- Specify number and types of panels
- Specify number of remote stations
- Configuration tool for field setup
- Factory configuration available

NOTICE: The information contained in this document is intended only as a summary and is subject to change without notice. The devices described in this document have specific instruction sheets which cover various technical, limitation and liability information. Copies of these instruction sheets and the General Product Warning and Limitations Document, which also contains important information are provided with the product and are available from Harrington Signal Inc. Fire Alarm. Information contained in these documents should be consulted before specifying or using the product. For further information or assistance concerning particular problems contact Harrington Signal Inc. Harrington Signal Inc. Fire Alarm reserves the right to change specifications without notice.